



Porter & Charles

SOPS60-1
24" Built-In Stainless Steel Oven

2020 SPECIFICATION SHEET

SOPS60-1

24" Built-In Stainless Steel Oven



OVEN ACCESSORIES

- Grill/roasting pan
- 2 chrome oven racks
- Optional : LIE-7427640 - Silver cabinet base air ventilation grill

ELECTRICAL REQUIREMENTS

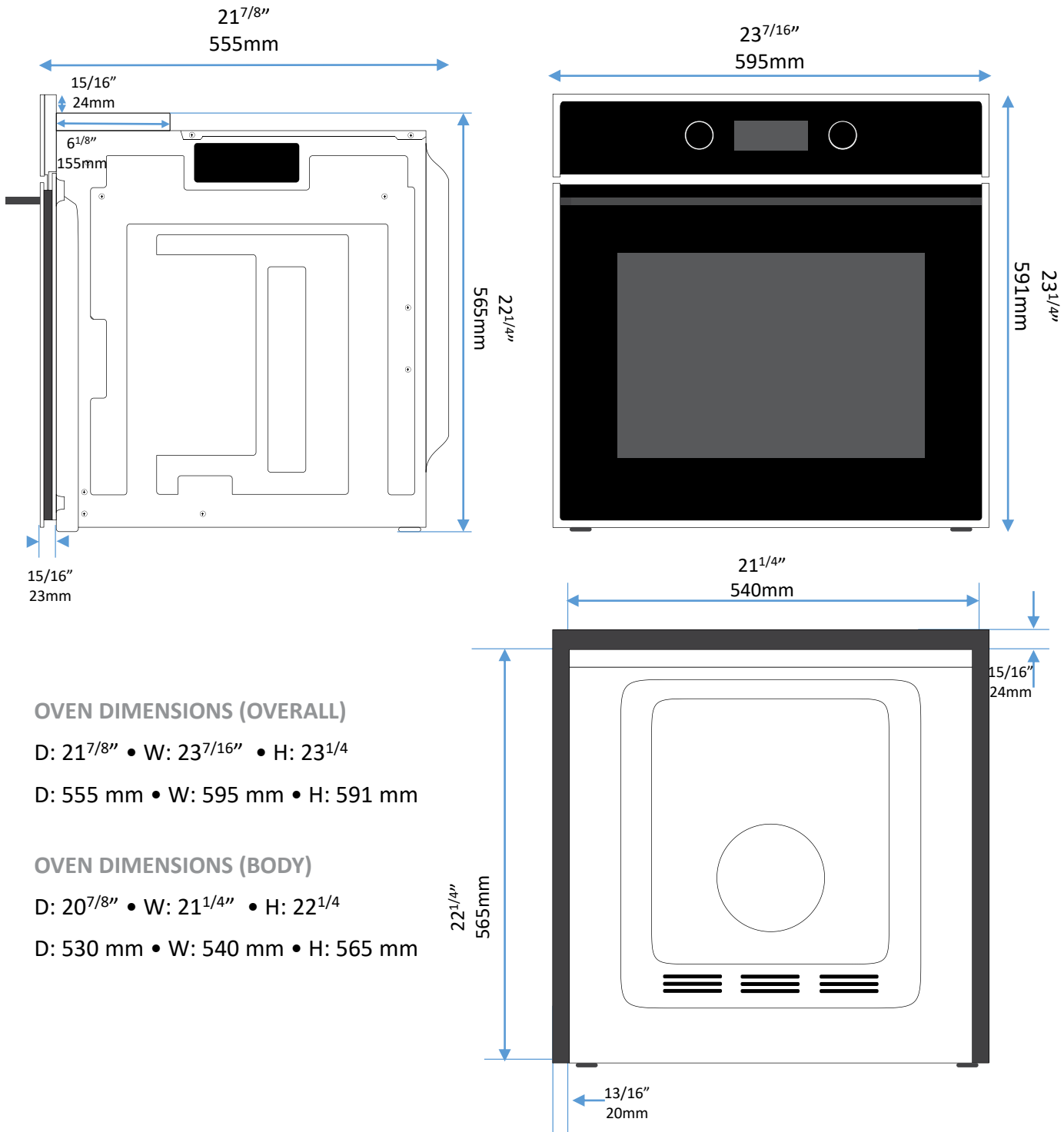
- 208/240 Volt, 60Hz, 20 amp, 3215W
- Supplied with a 5ft long electrical cable and must be hard wired

OVEN FEATURES

- 70 litre (2.5 cu. ft.) interior capacity
- 11 functions including True Fan convection
 - Conventional
 - Grill
 - MAXIGrill
 - Lower element
 - MAXIGrill with fan
 - True Fan convection
 - Pizza mode
 - ECO
 - Defrost
 - Fast pre-heating
 - Steam clean assist
- Control knobs with digital display
- Double glazed down fold removable door with removable glass pane
- Fully automatic digital clock and timer
- Cooking Duration Feature and End Time cooking control
- Black enamel interior for easy cleaning
- 5 rack positions
- Child safety lock
- Bright interior light

SPECIFICATIONS

SOPS60-1



OVEN DIMENSIONS (OVERALL)

D: $21\frac{7}{8}''$ • W: $23\frac{7}{16}''$ • H: $23\frac{1}{4}''$

D: 555 mm • W: 595 mm • H: 591 mm

OVEN DIMENSIONS (BODY)

D: $20\frac{7}{8}''$ • W: $21\frac{1}{4}''$ • H: $22\frac{1}{4}''$

D: 530 mm • W: 540 mm • H: 565 mm

SPECIFICATIONS

SOPS60-1

OVEN DIMENSIONS (BODY)

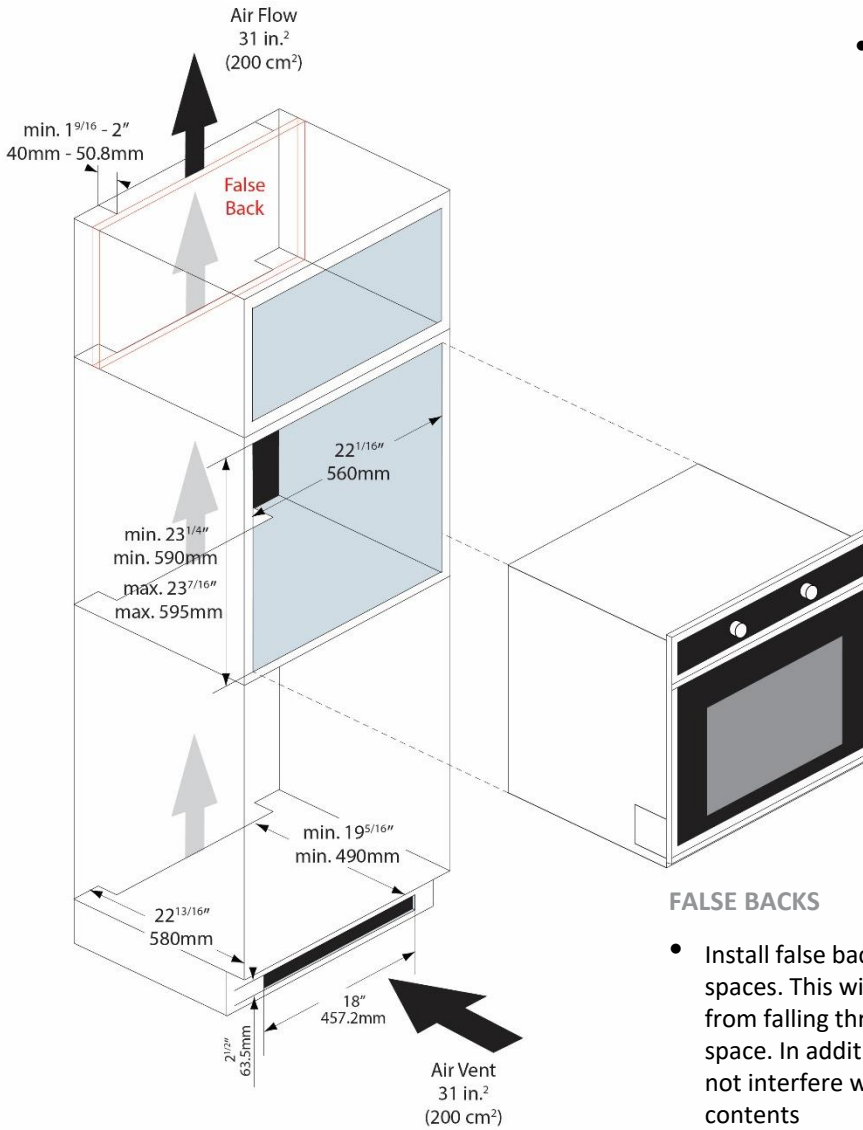
D: 20^{7/8"} • W: 21^{1/4"} • H: 22^{1/4"}

D: 530 mm • W: 540 mm • H: 565 mm

CUT-OUT DIMENSIONS

D: min. 22^{13/16"} • W: 22^{1/16"} • H: min. 23^{1/4"} – max. 23^{7/16"}

D: min. 580 mm • W: 560 mm • H: min. 590mm – 595mm



ELECTRICAL REQUIREMENTS

- 220 / 240 Volt, 60Hz, 20 AMP, 3215W

IMPORTANT

- PORTER&CHARLES ovens are supplied with a 5' long electrical cable and must be hard wired to the electrical supply
- PORTER&CHARLES ovens uses the following wires:
RED & BLACK: Live Wires
GREEN: Ground
The Neutral (White) wire is not required for the electrical installation.

FALSE BACKS

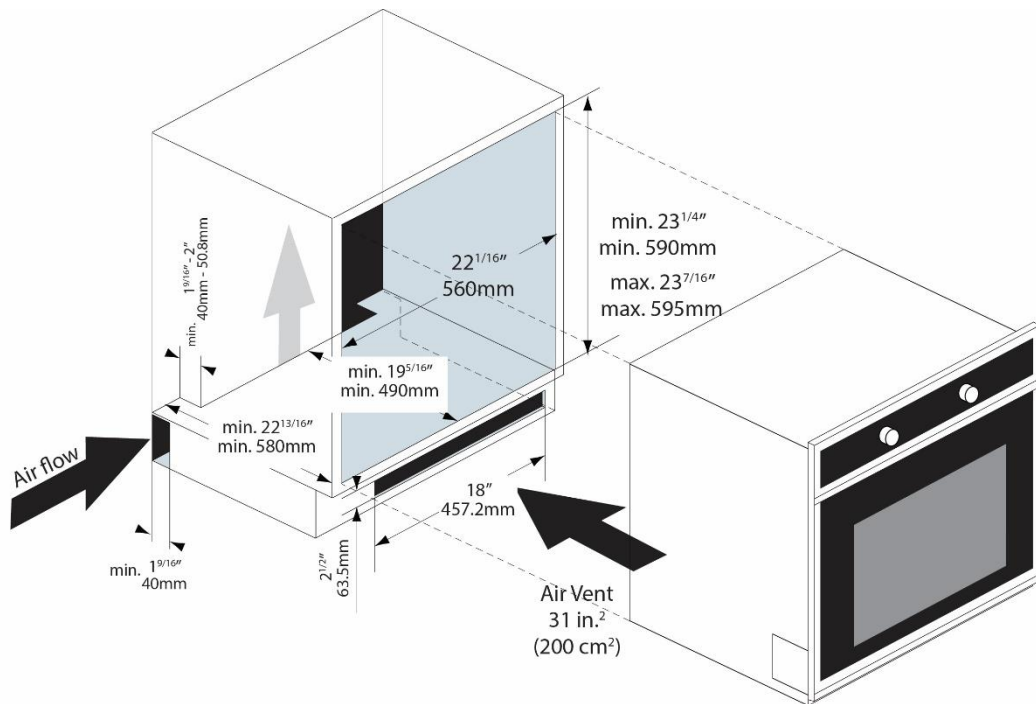
- Install false backs for storage spaces. This will prevent contents from falling through the vent space. In addition, warm air will not interfere with your stored contents

SPECIFICATIONS

SOPS60-1

AIR FLOW REQUIREMENTS

- If the oven is being placed under the counter, there must be a minimum gap of $1^{9/16}''$ (4cm) cut out of the shelf behind the oven to allow air to flow freely.
- If sufficient air flow is not provided, the life of the appliance will be shortened.
- Cut-out in the toe kick is recommended.
- Bottom vent grill (7427640) available.



OVEN DIMENSIONS (BODY)

D: $20^{7/8}''$ • W: $21^{1/4}''$ • H: $22^{1/4}''$

D: 530 mm • W: 540 mm • H: 565 mm

CUT-OUT DIMENSIONS

D: min. $22^{13/16}''$ • W: $22^{1/16}''$ • H: min. $23^{1/4}''$ – max. $23^{7/16}''$

D: min. 580 mm • W: 560 mm • H: min. 590mm – 595mm



Porter & Charles

Porter & Charles Appliances are designed and manufactured to the highest standards. Each appliance is covered by a comprehensive 2-year parts and labour warranty.

Refer to product warranty policy for complete terms and conditions.

FOR PARTS AND SERVICE

Euro-Parts & Service

39822 Belgrave Road, Belgrave, ON. N0G 1E0

1 866 722 2262

www.euro-parts.ca • parts@euro-parts.ca •
service@euro-parts.ca

Porter & Charles appliances are imported and distributed in North America by Euro-Line Appliances Inc. For more information, please visit one of our showrooms or

www.euro-line-appliances.com www.elawest.com

EURO-LINE APPLIANCES INC.

871 Cranberry Court
Oakville, ON L6L 6J7 Canada
905 829 3980
1 800 421 6332
marketing@euro-line-appliances.com

EURO-LINE APPLIANCES WEST INC.

101-1014 Homer Street
Vancouver, BC V6B 2W9 Canada
604 235 3980
1 855 ELA WEST (352 9378)
info@elawest.com

